

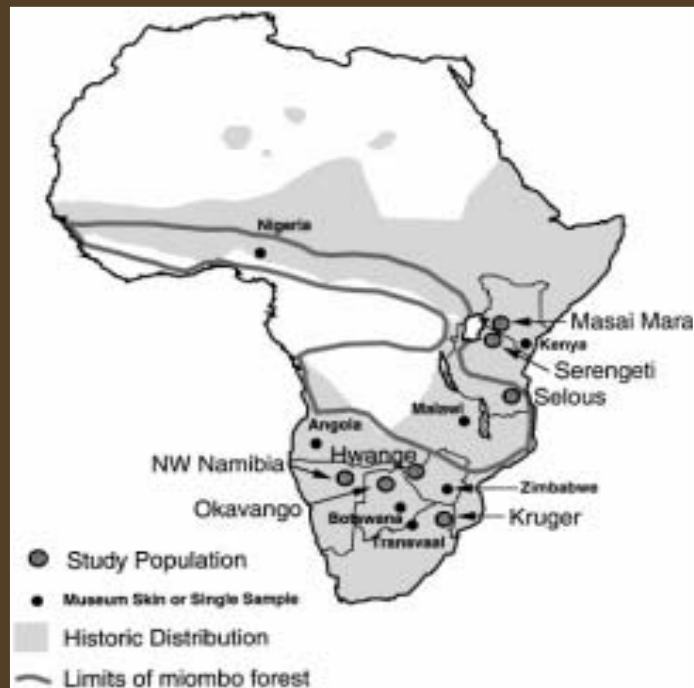
# Population Summary of the Southern Kruger National Park Wild Dogs



Janet Edwards, Harriet Davies-Mostert, Michael Somers &  
Paulette Bloomer

# African Wild Dog (*Lycaon pictus*)

- Found in conservation areas
- #1 endangered carnivore in SA



Historic distribution of wild dogs

(taken from Girman *et al.* 2001)

# Reasons for Decline

- Habitat destruction & fragmentation
- Loss of natural prey
- Direct (& accidental) persecution by humans through hunting, snaring & poisoning



# Management

- 1997 → metapopulation approach
- Kruger - only self-sustaining population in SA



# MSc Project Aim

- Obtain genetic data on South Africa's wild dog subpopulations to
  - facilitate sound metapopulation management that mimics natural gene flow
  - reduce inbreeding
  - maintain levels of genetic variability similar to free-ranging wild dog populations



# Kruger National Park

- September – November 2007
- Relying on tourist sightings in Southern Kruger (Tshokwane → southwards)
  - Wild Dog Hotline
  - Flyers
  - Media release
  - 2x SABC news broadcasts
  - Radio interview



**WILD DOG HOTLINE**  
Please help us find the Kruger Wild Dogs.



**REMEMBER:**  
\*Location\*  
\*Time\*  
\*Number of Wild Dogs\*

If you are LUCKY enough to see African Wild Dogs south of Satara Camp during your stay in Kruger National Park, please phone, text, sms or memo our WILD DOG HOTLINE number. Your immediate response will be helping us obtain genetic samples so a family tree of all South African Wild Dogs can be created in order to assist in future Wild Dog relocations and inbreeding avoidance.

**Phone or Text : 076 725 5242**

Messages should include the location, time & number of wild dogs seen

Please email photos or sighting information to [ccp@wcd.org.za](mailto:ccp@wcd.org.za)

Project collaborators : 

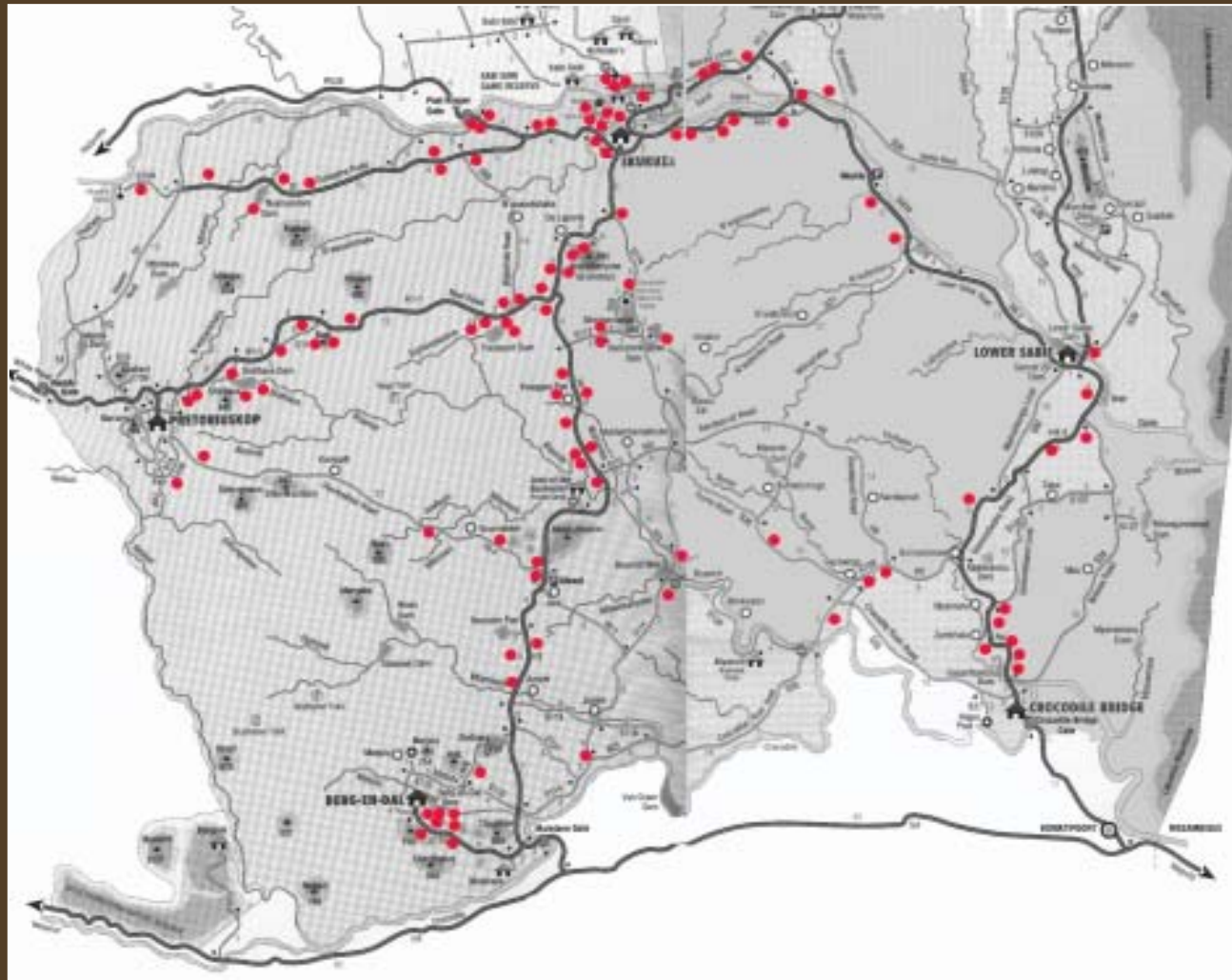
Project sponsored by : 

# Methods

- Tourist sees wild dogs & calls hotline #
- Verification of wild dogs
- VWS team radioed/called
- VWS team responds & biopsy dart wild dogs
- ID photos were taken of individuals sampled



# Tourists reports



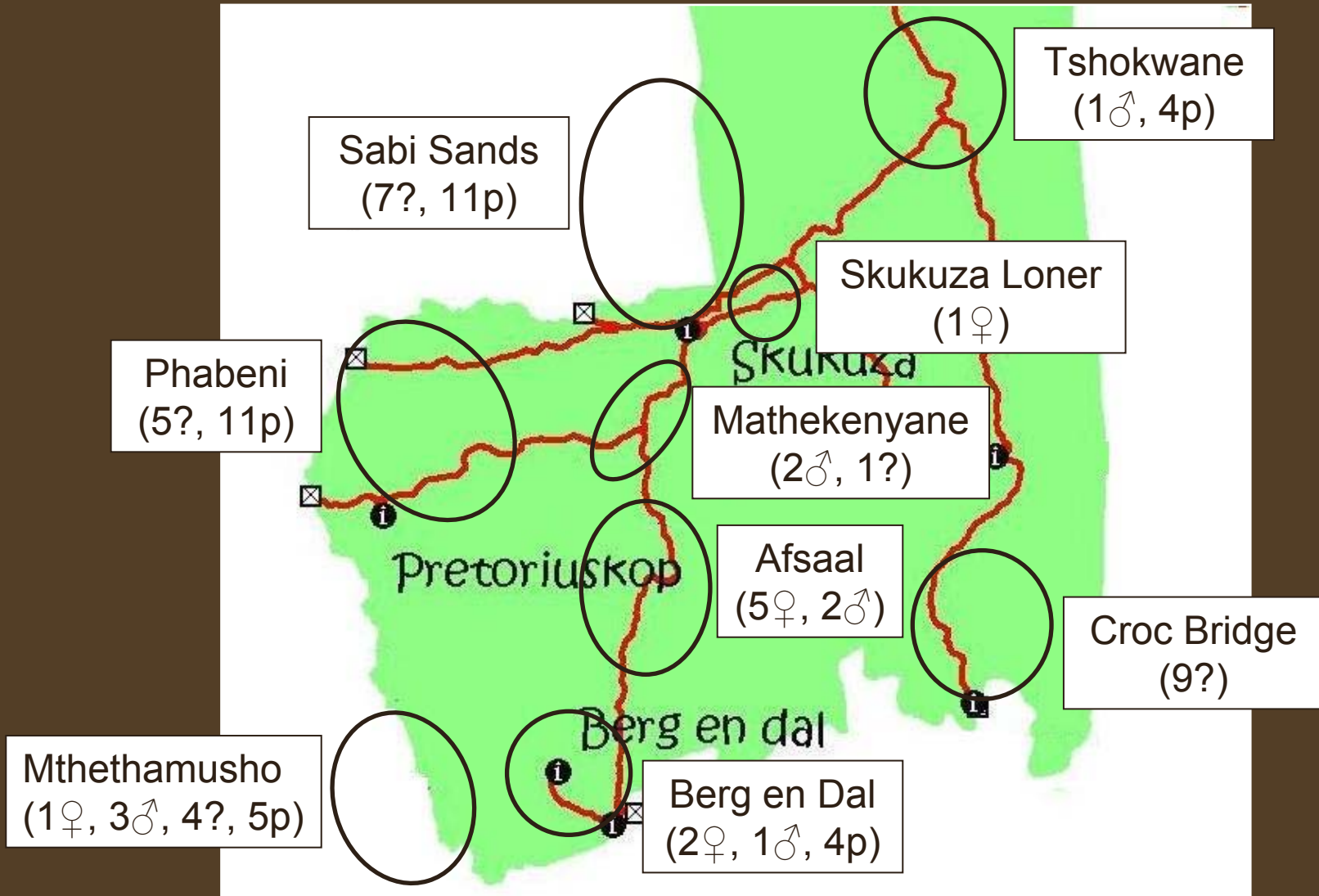
Red dots show where tourists reported wild dog sightings during September – November 2007

# Result summary

- 10 packs identified: 2 south, 2 central
- 84 individuals acknowledged
- 32 samples collected from 70% known packs



# Pack break down



# Sampled individuals

- 32 wild dogs sampled

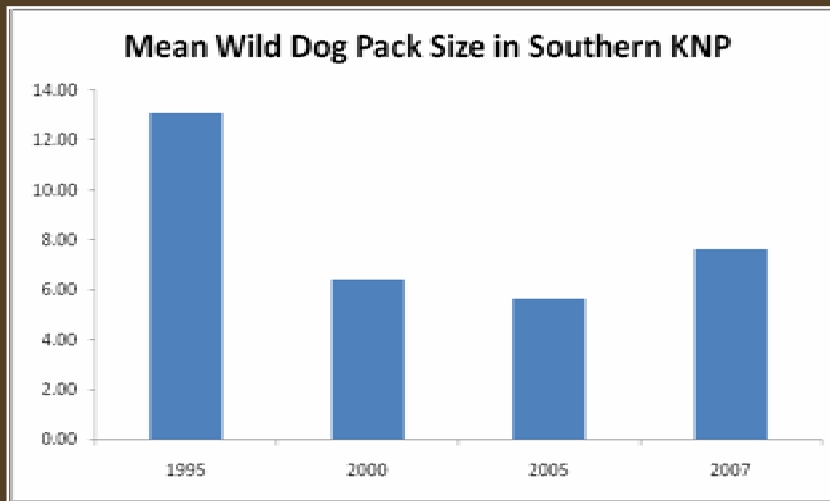
The number and sex of wild dogs samples from each pack in southern KNP

Pack	Number sampled	Male	Female	Unknown
Phabeni	6	2	3	1
Afsaal	4		1	3
Mthethamusho	4	3	1	
Tshokwane	2	1	1	
Sabi Sands	8	2	6	
Sabi Dispersers	1	1		
Berg en Dal	7	3	4	
<b>Total</b>	<b>32</b>	<b>12</b>	<b>16</b>	<b>4</b>

# Previous Photo Census Data

Comparisons between the previous census Wild Dog counts and the 2007 Wild Dog counts in Southern KNP.

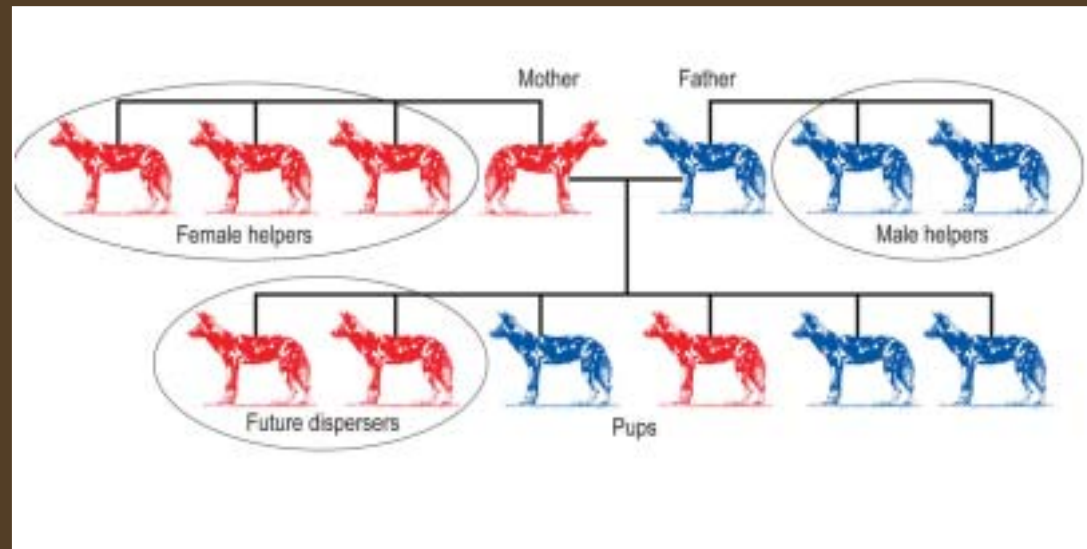
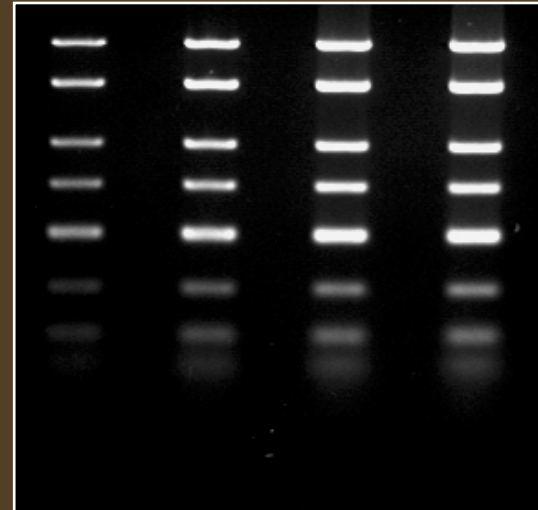
Year	Area	Population Count	Number of Wild Dog Packs
1995	South	157	12
2000	South	77	12
2005	South	45	8
2007	South	61	8



A comparison between the previous Wild Dog censuses and 2007's average Wild Dog pack sizes in Southern KNP.

# Future Work

- Microsatellite genotyping
  - 22 loci
- Inbreeding
- Heterozygosity
- Parentage
- Relatedness



# Special thanks

- The Veterinary Wildlife Services team:  
Dr Peter Buss, Dr Danny Govender, Jenny Joubert, Khosi Maseko & David Muchocho. (Apologies for all the very early mornings on so many of the weekends 😊 )
- The tourists & staff who reported their wild dog sightings to the hotline



# Acknowledgements

- My supervisors & the University of Pretoria
- Veterinary Wildlife Services Team
- Dr Markus Hofmeyr
- SANParks & all the Kruger staff especially Raymond & Rene Travers
- Masslift
- Colchester Zoo's Action for the Wild
- Endangered Wildlife Trust
- Mr Stuart Bromfield (emergency collar)
- The Edwards family



# The End

