

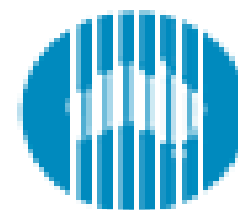


The invasive ant *Lepisiota incisa* in Skukuza village

H. Sithole & C. L. Parr



South African  
NATIONAL PARKS



CSIRO

# Introduction

A detailed microscopic image of a green ant, showing its head, thorax, and the beginning of its abdomen. The ant is covered in fine, light-colored hairs. The background is a soft, out-of-focus green.

- Household pest since mid 1990s
  - Irritant (crawling all over)
- Exotic to the ecosystem?

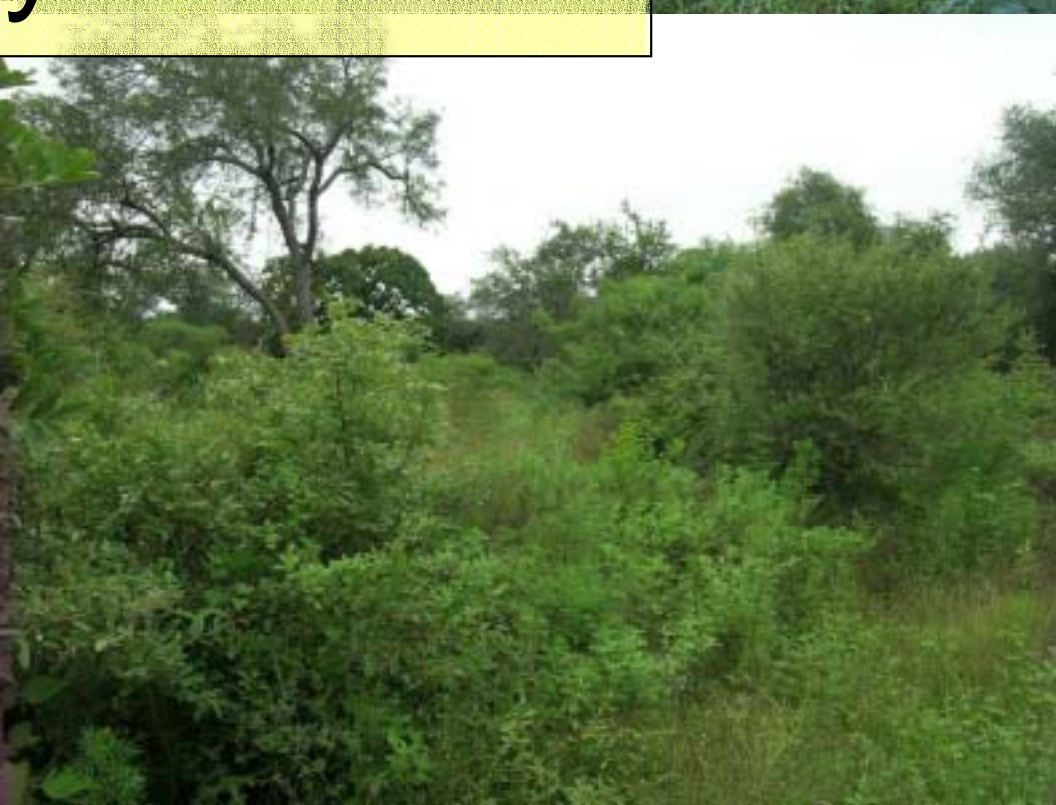
A microscopic image of an ant's head and thorax, showing fine details of its anatomy. The ant is positioned horizontally, with its head on the left and thorax extending towards the right. The image is overlaid with a semi-transparent yellow box containing text.

# Introduction

- Objective 1:
  - Distribution of *Lepisiota incisa* & other ants in habitats with different degrees of anthropogenic activities
- Objective 2:
  - *Lepisiota incisa* interaction with other ants



# Study Areas



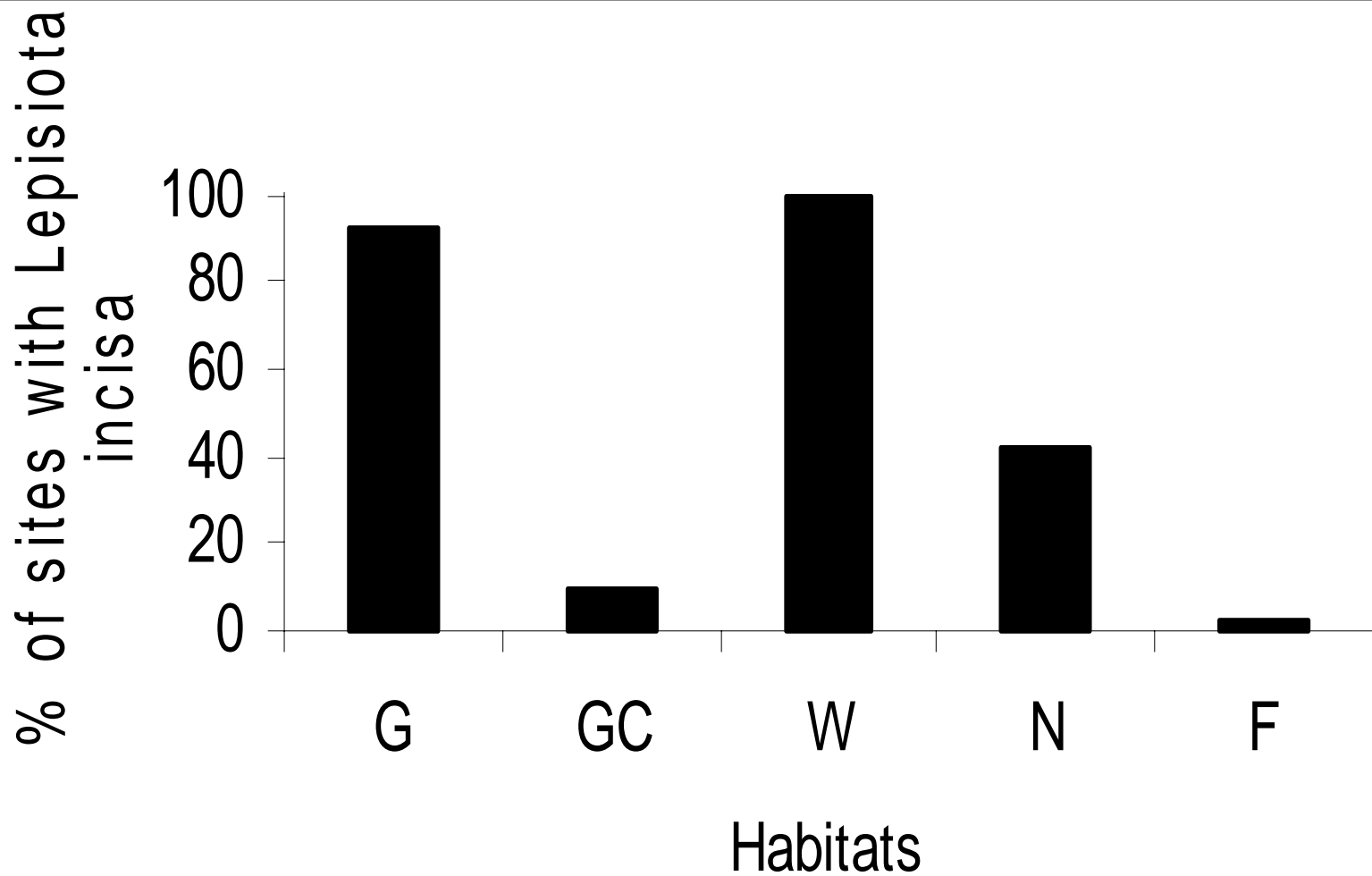


# Sampling Methods



# Results

- Lepisiota Distribution



# Results

- Species Diversity & Composition

	G	GC	W	N	F
No. of sites	14	10	4	5	16
Mean spp / site	9.6	16.9	21	14.8	13.5
Total spp	22	37	20	24	41
Predicted spp richness (ACE)	23	41	25	26	55
Exclusive spp	3	12	1	2	14

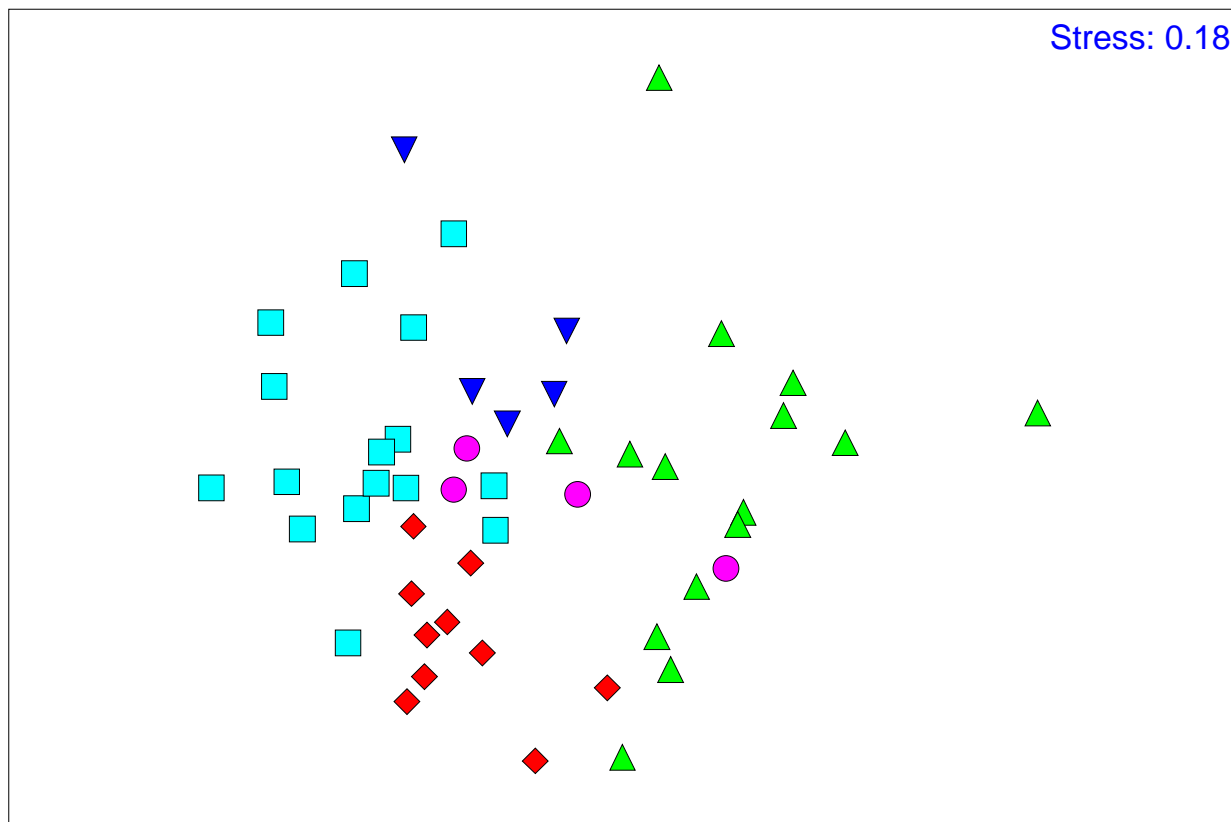
# Results

- Pitfall Trapping
- Difference in mean species richness

	GC	F	G	N	W
GC	--				
F	3.67	--			
G	7.300	3.933	--		
N	2.1	1.267	5.200	--	
W	4.100	7.467	11.400	6.200	--

# Species Composition – NMDS

*Skukuza Lepisiota survey*



# Species Composition – ANOSIM

	GC	F	G	N	W
GC	--				
F	0.001	--			
G	0.001	0.001	--		
N	0.001	0.01	0.007	--	
W	0.012	0.016	0.082	0.345	--

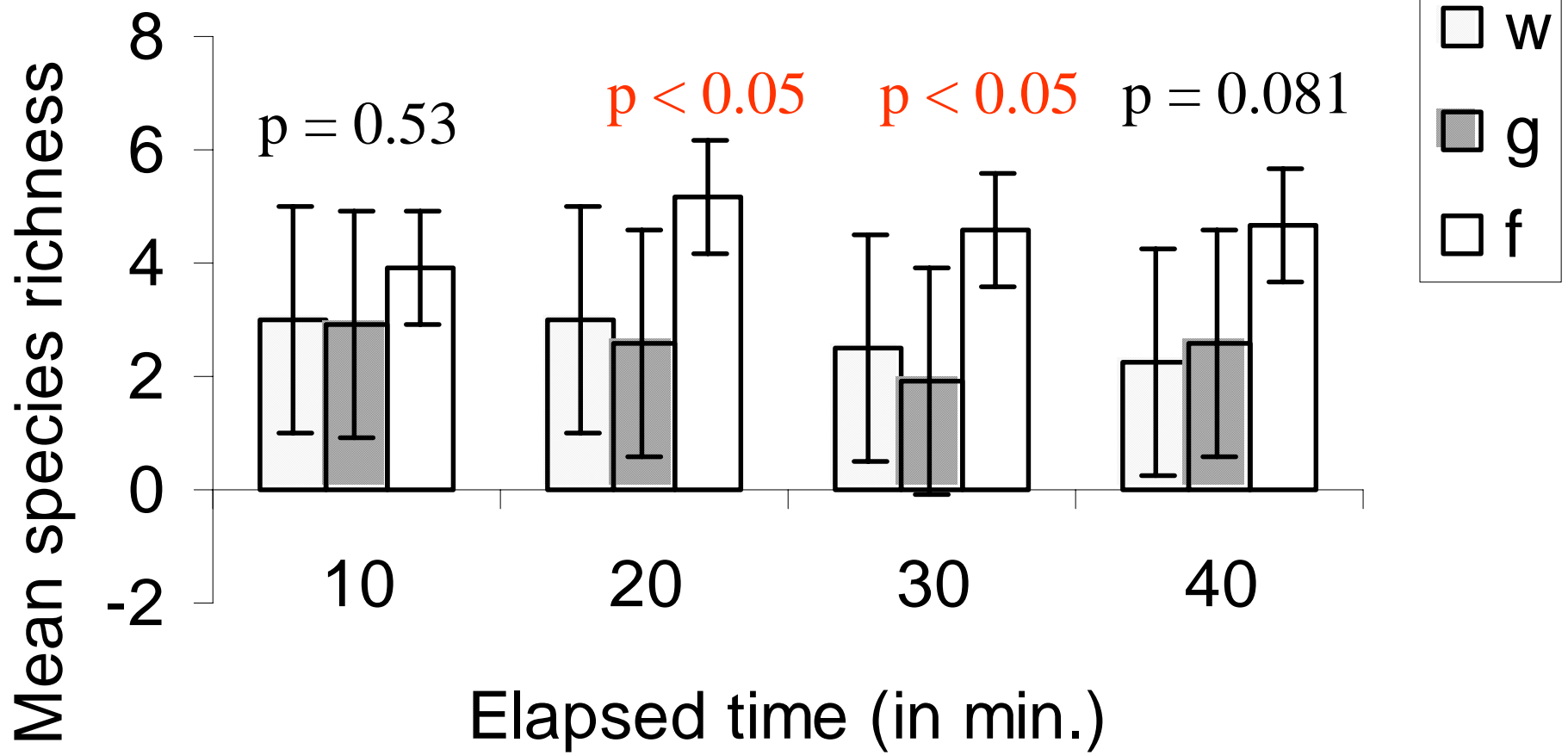


	G	F	% Cntbn
<i>Monomorium damarense</i>	0.33	10.33	8.77
<i>Ocymyrmex fortior</i>	0.20	7.38	8.52
<i>Pheidole megacephala</i>	484.93	0.63	7.52
<i>Pheidole</i> TBN	5.93	0.25	6.88
<i>Anoplolepis custodiens</i>	0.33	399.19	5.87
<i>Monomorium junodi</i>	0.00	5.81	5.53
<i>Tetramorium sericeiventre</i>	5.47	1.81	5.36

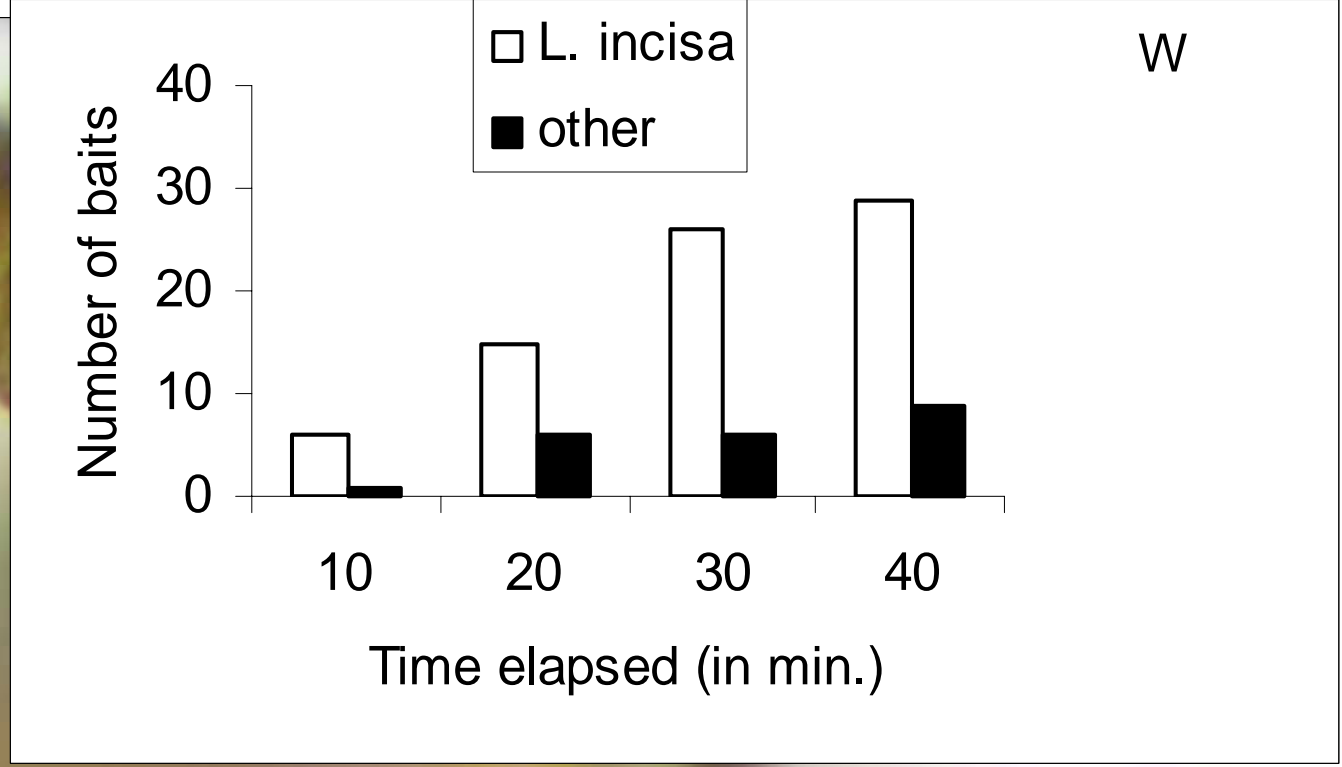
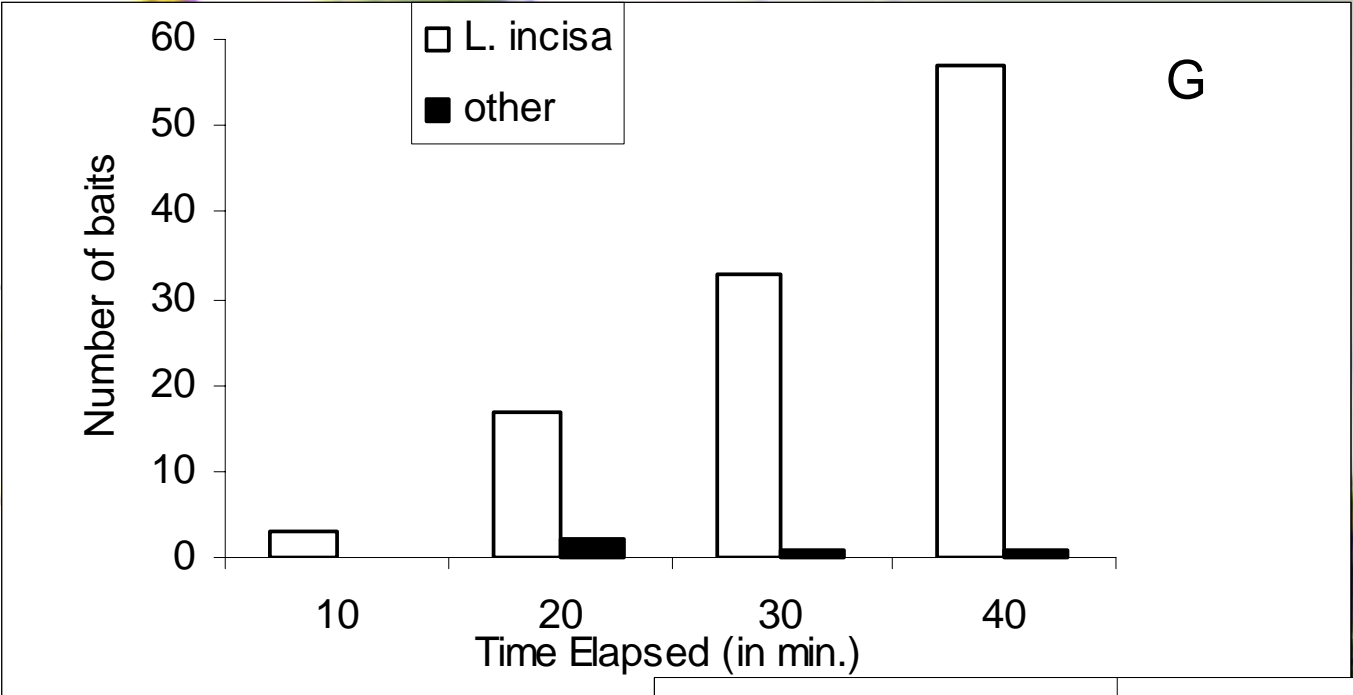
- Baiting

	G	W	F
Spp richness	22	8	30
Exclusive spp	10	1	19

• Baiting



# *L. incisa* recruitment



# Conclusion

- Exotic to the ecosystem?
  - Reduced intraspecific aggression
  - Not sampled in sites far from gardens
- Monitor to determine rate of invasion
  - Riparian habitats

# Acknowledgements

- Andersen A
- MacFadyen S
- Smit I
- Kruger J
- Mphuthi A
- Ndlovu V
- Keretetse M
- Ndlovu V
- Keretetse M
- Sithole O
- Mathe M